

Project Sheet

West Bay Street

Location: Chatham County, Georgia
Client: Chatham County Engineering
Type: Major Road Safety & Operational Improvement
Funding: Federal, State & Local

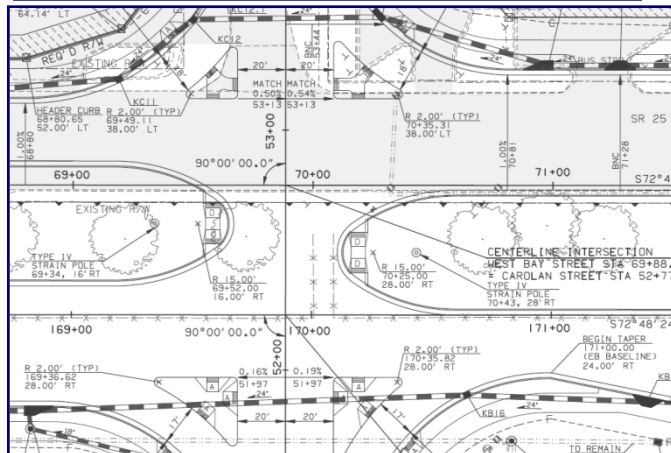
Project Information:

- The project consists of widening 1.3 miles of an existing substandard 4-lane facility to a 4-lane section with a raised median, urban shoulders and sidewalks.
- The completed project will provide a safe and aesthetically pleasing gateway to Savannah.
- An extensive alternatives analysis was performed in order to ensure minimization of impacts to historic residential neighborhoods, commercial relocations and overall project cost.

Scope of Services:

McGee Partners' responsibilities included:

- Preparation of GDOT Concept Report & Layouts
- Preliminary Construction Plans
- Right Of Way Plans
- Traffic Signal Plans
- Final Construction Plans
- NPDES Permitting



Several large, existing 80-year old live oak trees have been incorporated into the design by providing a wide median between the eastbound and westbound lanes, 17 trees will be saved, and an additional 25 trees will be planted in the median.